

The Heavy Costs of High Bail: Evidence from Judge Randomization

Arpit Gupta*
Christopher Hansman†
Ethan Frenchman‡§

July 1, 2016

Abstract

In the United States, roughly 450,000 people are detained awaiting trial on any given day, typically because they have not posted bail. Using a large sample of criminal cases in Philadelphia and Pittsburgh, we analyze the consequences of the money bail system by exploiting the variation in bail-setting tendencies among randomly assigned bail judges. Our estimates suggest that the assignment of money bail causes a 12% rise in the likelihood of conviction, and a 6–9% rise in recidivism. Our results highlight the importance of credit constraints in shaping defendant outcomes and point to important fairness considerations in the institutional design of the American money bail system.

*Email: ag2968@columbia.edu; Columbia GSB

†Email: cjh2182@columbia.edu; Columbia University

‡Maryland Office of the Public Defender

§We thank Edward Morrison, Ilyana Kuziemko, Anne Milgram, and seminar participants at New York University and Columbia Law School for helpful comments. We are grateful to Joel Mankoski and the Pennsylvania Office of the Administrative Courts for data access, as well to the Center for Justice at Columbia University for financial assistance.

1 Introduction

Roughly 450,000 people in the United States are held in jail awaiting trial on any given day.¹ These individuals have not been convicted of a crime and are presumed to be innocent of the charges for which they have been jailed. For the majority of defendants the barrier to release is financial: they are unable or unwilling to post bail. Due to limited judicial resources, defendants often remain incarcerated for months or years awaiting trial.² Many defendants who are detained on money bail before trial may choose to plead guilty in exchange for release, rather than risking continued detention or an uncertain trial outcome.

There is significant evidence of a correlation between pretrial detention and both conviction and recidivism, consistent with a direct impact of bail assessment on defendant outcomes (for instance, Lowenkamp, VanNostrand and Holsinger (2013*a*), Lowenkamp, VanNostrand and Holsinger (2013*b*), Phillips (2007), and Phillips (2008)). However, prior research has struggled with causally estimating the impact of money bail due to the endogenous nature of detention hearings.³ When judges determine whether to release an arrestee and the conditions of such release, they consider, among other things, the facts of the case, the strength of the evidence, and the arrestee’s criminal history, ties to the local community, and financial resources. These factors may be related to factual guilt and render correlations between money bail assessments and outcomes like convictions and recidivism difficult to interpret.

This paper investigates the causal impact of money bail on guilty pleas and recidivism using comprehensive court data from the two largest cities in Pennsylvania: Philadelphia and Pittsburgh. By money bail, we refer to the requirement that criminal defendants post a cash amount as bail in exchange for freedom before trial.⁴ In Philadelphia, defendants are assigned bail at a centralized, 24-hour-a-day court presided over by arraignment court magistrates, who we refer to as judges for convenience. These judges differ in what we call severity, or the propensity to assess bail. All else being equal, some judges assess money bail relatively frequently, while others do so sparingly. The Philadelphia system assigns

¹See <http://www.bjs.gov/content/pub/pdf/jim14.pdf>.

²In our data, the median time between bail arraignment and trial is 200 days.

³A notable exception is Abrams and Rohlfs (2011) who exploit an experiment in Philadelphia in the 1980s.

⁴Other forms of bail may require non-monetary conditions, or only require the defendant to pay in the event of a non-appearance.

defendants to these judges in an effectively random manner, creating a natural experiment that we exploit to determine the role of money bail in determining defendant outcomes. We document that defendants' assignment to more severe judges raises the probability of being assessed money bail for reasons unrelated to other case factors, including defendant characteristics. This natural experiment allows us to then study the implications of effectively exogenous impositions of money bail on further defendant outcomes.

We find that the assessment of money bail is a significant, independent cause of convictions and recidivism. In Philadelphia, criminal defendants who are assessed money bail are 12% (6 percentage points) more likely to be convicted. These effects appear to be driven by the subset of cases where arrestees fail to post money bail and are therefore detained rather than by defendants who are able to make bail. We also investigate money bail assessment and outcomes in Pittsburgh, where judicial assignment is based on arrest location, and find similar results. We combine the Philadelphia and Pittsburgh samples to gain statistical precision in examining the lasting negative effects of money bail after the conclusion of the underlying criminal case. We document that the assessment of money bail increases recidivism in our sample period by 6-9% yearly (0.7 percentage points).

Our results are primarily driven by whether money bail is required, and not by the amount of money bail. In other words, the assessment of money bail, rather than the bail size, appears to be causing convictions. A key implication of this finding is that simply lowering required bail amounts will not ameliorate harms imposed by money bail. Our findings persist among a number of subgroups—non-white defendants, those assigned a public defender, and male defendants. We find estimates that are even larger among defendants charged with felonies, though we do not reach statistical significance in that sample. This suggests that our effects are not merely driven by convictions for petty crimes.

We do not attempt to isolate the exact channel by which money bail causes convictions and recidivism. Money bail, as a source of pretrial detention, imposes significant costs on defendants. As the Supreme Court has written, pretrial detention “may imperil the suspect’s job, interrupt his source of income, . . . impair his family relationships [and affect his] ability to assist in preparation of his defense.”⁵ Many defendants who are detained on money bail

⁵*Gerstein v. Pugh*, 420 U.S. 103, 114 (1975).

before trial may consequently choose to plead guilty to avoid or minimize further detention. Prosecutors commonly offer detained defendants a plea of time-served, where defendants will receive credit for time already spent in detention and will therefore be released immediately upon conviction. Other potential channels include the difficulty detained defendants have communicating with their counsel and properly preparing a defense; changes in behavior among various institutional actors such as prosecutors, defense attorneys, judges, and jurors toward defendants who are incarcerated pretrial; the limited opportunity for detained arrestees to participate in diversionary programs and other resolutions not resulting in convictions; and the financial strain of making bail.⁶ Money bail may also directly influence recidivism through the harms of pretrial incarceration imposed upon those those unable to make bail, post-trial incarceration following conviction, or the stigma of conviction.⁷

Despite the multiplicity of possible channels, we emphasize that our results provide novel evidence of a causal role of money bail and pretrial detention on defendant outcomes. The relationship between money bail, conviction, and recidivism suggests a strong interaction between poverty and the criminal justice system. A large literature has examined the credit constraints facing American households that make even small money bail amounts difficult to post (see Lusardi, Schneider and Tufano (2011)). While it is feasible that money bail could impact convictions among those with sufficient liquid assets to post bail, it is more likely that these effects come primarily from the credit-constrained. It is important to note that a large majority of arrestees in our sample qualified for representation by the public defender, and therefore are presumably indigent.

The interactions between money bail and subsequent defendant outcomes pose substantive legal issues. From a liberty perspective, these relate to the incarceration of presumptively innocent people and the basic assumption that convictions reflect only the merits of the underlying case. Bail also raises equality issues related to the requirement of equal access to justice and the prohibition against wealth discrimination. Equality by race is a further concern, and we find evidence consistent with racial discrimination in bail setting: non-white defendants

⁶Though bail bondsman can front bail amounts in exchange for a collateral value which is typically 10%, even these relatively smaller collateral values may be out of reach for criminal defendants facing liquidity constraints. In Philadelphia, the court may accept 10% of the bail amount.

⁷See, e.g., Baylor (2015); Appleman (2012); Phillips (2008).

are more likely to be assessed money bail yet less likely to be found guilty. However, this correlation is merely suggestive, and may reflect unobserved factors that are correlated with race.

Our findings also raise institutional design questions regarding the American money bail system as a whole. The money bail system in Philadelphia has a lot in common with the money bail systems used in many cities around the country. In Philadelphia, as in many other cities, people are arrested and see a judicial officer who determines whether to release a person pending trial or impose money bail. Those people who are unable to pay their bail have the opportunity to plead guilty or remain in jail until trial. In these respects the Philadelphia money bail system is similar to that used in New York, Baltimore, and many other cities. In a system similar to Philadelphia and Pittsburgh, our research suggests that money bail causes convictions and recidivism.⁸

One suggested solution to the perceived inequities of pretrial detention is the adoption of empirical pretrial risk assessments. Such tools, based on multivariate models built from large sets of defendant data, create recommendations for release or conditions of release. Despite the use of such assessment tools in Philadelphia and Pittsburgh in the time period covered by our analysis, judges varied widely in assessing bail amounts for similar defendants, calling into question the ability of such tools to rein in judicial discretion.

To contextualize our findings on guilt and recidivism, we examine whether the assessment of money bail induces defendants to appear at trial, the stated purpose of the money bail system. As we are unable to explicitly observe defendants failing to appear, we construct two proxies based on the issuance of bench warrants. While these proxies are imperfect — both likely understate the true number of failures to appear — we find no evidence that money bail increases the probability of appearance. These results should be interpreted as preliminary, and a more nuanced study of court appearances using more complete data is necessary. Nevertheless it is notable that we are unable to find an obvious impact of money bail. Philadelphia was estimated to have spent \$290 million on jailing in 2009, and 57%

⁸Of course, the impact may differ depending on the population. For instance, in certain places, defendants may be relatively well-off and have the general ability to pay money bail. In such a place, we would expect that the causal impact of money bail would be lower than in Philadelphia, where many people are too poor to pay their bail.

of the daily jailed population was detained awaiting trial (Eichel, 2010). Rationalizing the costs imposed by money bail (via these detention costs, as well as convictions and recidivism) requires substantial compensating public benefits, and we find no evidence that such benefits exists.

Our research has a close connection to the literature on pretrial justice.⁹ There is a large body of evidence suggesting that pretrial custody status is associated with the ultimate outcomes of criminal cases, with detained defendants consistently faring worse than defendants at liberty.¹⁰ Past work has uncovered the correlation between money bail, pretrial detention, and conviction (e.g. Phillips (2007), Phillips (2008)), and examined other policy considerations regarding the design of pretrial detention systems (See Lowenkamp, VanNostrand and Holsinger (2013a), Lowenkamp, VanNostrand and Holsinger (2013b), Bechtel et al. (2012), and Phillips (2012)).

In the economics literature, beyond Abrams and Rohlfs (2011), our work is most closely related to papers utilizing random assignment of judges within the criminal justice system such as Kling (2006), Doyle Jr (2007), Doyle Jr (2008), Mueller-Smith (2016) and Aizer and Doyle (2015), as well as in other contexts, such as Chang and Schoar (2007), and Dobbie and Song (2015). Especially relevant is concurrent work by Stevenson (2016), who uses a similar identification strategy in Pennsylvania to examine the impacts of pretrial detention on case outcomes.

Our paper is structured as follows: Section 2 presents legal background on the money bail system in Philadelphia and Pittsburgh, Section 3 explains our data and empirical strategy, Section 4 contains estimation results, and Section 5 concludes.

2 Legal Background and Bail Hearings

2.1 Legal Background

Any person who is arrested without a warrant is entitled to a hearing within 48 hours of arrest.¹¹ At this hearing, a judicial officer must determine whether there is probable cause for

⁹The Pretrial Justice Institute has created an exceptionally detailed bibliography, available at: <http://www.pretrial.org/wpfb-file/pji-pretrial-bibliography-pdf/>.

¹⁰See ABA Standards for Criminal Justice: Pretrial Release 29 (3d. ed. 2007).

¹¹*Cnty. of Riverside v. McLaughlin*, 500 U.S. 44, 56 (1991); *Gerstein v. Pugh*, 420 U.S. 103, 114 (1975).

the arrest prior to the imposition of “any significant pretrial restraint of liberty.”¹² Across the country, this initial appearance has evolved into a “hearing at which the magistrate informs the defendant of the charge in the complaint, and of various rights in further proceedings, and determines the conditions for pretrial release.”¹³

At a bail hearing, judges have a number of options available to them:

1. *Release on Recognizance (ROR)* — Requires defendant only to agree to appear at a later date
2. *Non-monetary Conditions* — Allows some non-monetary restriction to be placed on the defendant, such as pretrial supervision, or a curfew
3. *Unsecured Monetary Condition* — Written agreement to be liable for a fixed financial payment
4. *Secured Monetary Condition* — Defendant must satisfy a financial condition paid to the court either directly, through a bail bondsman, or other collateral such as real property, in order to secure release
5. *No Bail* — Defendant is to be held pending trial

A variety of constitutional and legal protections constrain the discretion of judicial officers in determining whether to detain or release a defendant and what conditions to place on such release. First, pretrial liberty is a fundamental right independently guaranteed by the Constitution:¹⁴ “In our society liberty is the norm, and detention prior to trial or without trial is the carefully limited exception.”¹⁵ Therefore pretrial detention must be “narrowly focus[ed]” to the governments “compelling” interests in public safety and return to court.¹⁶ In determining whether to release a defendant, and what conditions to place on such release, the judicial officer must make an individualized assessment of the case and defendant.¹⁷

¹²*Gerstein*, 420 U.S. at 125.

¹³*Rothgery v. Gillespie Cnty, Tex.*, 554 U.S. 191, 199 (2008)

¹⁴*Foucha v. Louisiana*, 504 U.S. 71, 80 (1992); *Salerno*, 481 U.S. at 750.

¹⁵*Salerno*, 481 U.S. at 755.

¹⁶see *Salerno*, 481 U.S. at 750-51; *Stack v. Boyle*, 342 U.S. 1, 4 (1951); ABA Standards for Criminal Justice: Pretrial Release 37 (3d. ed. 2007).

¹⁷*Stack*, 342 U.S. at 5.

Bail also raises issues covered under the Equal Protection Clause of the Fourteenth Amendment to the Constitution, which has been interpreted to prohibit “punishing a person for his poverty.”¹⁸ Persons may not be incarcerated solely due to their inability to make a payment.¹⁹ For this reason such payments must take into account a persons financial resources. These guarantees find a statutory parallel in the Pennsylvania Rule of Criminal Procedure 523, which explicitly requires magistrates to consider arrestees financial resources when setting money bail.

2.2 Bail Hearings

In Pennsylvania, a magistrate presides over the initial appearance of an arrestee. In Philadelphia particularly, a centralized bail court operates 24 hours a day. Defendants from across the city appear before one of a team of appointed magistrates who conduct the initial detention hearing. Magistrates generally preside via CCTV over satellite locations in the city where arrestees are held. The centralized location, high case load, constant process, and a rotating magistrate calendar result in the effectively random assignment of defendants to magistrates (an assumption we test). Importantly for our purposes, magistrates in Philadelphia only preside over the initial appearance; they do not preside over subsequent hearings or trials. As a result, magistrates only impact the case via the bail assessment, and not at later stages.

In Pittsburgh, magistrates are elected to a six-year term to serve in a district court, which administers a particular geographic section of Allegheny county. A single magistrate handles the majority of the arrests that occur within their jurisdiction, although many arrestees are seen by other magistrates during weekends, nights, and other periods when the presiding magistrate is not in service. As a result, defendants in Pittsburgh are assigned to judges in part based on the location and time of their arrest.

At the pretrial detention hearing in both Pittsburgh and Philadelphia a magistrate hears information from the defendant (or the defendant’s counsel) and the prosecutor relevant to the defendants flight risk and public safety. This information includes the many factors set

¹⁸(*Bearden v. Georgia*, 461 U.S. 660, 671 (1983)).

¹⁹Id.; see also *Tate v. Short*, 401 U.S. 395 (1971); *Williams v. Illinois*, 399 U.S. 235 (1970); and *Smith v. Bennett*, 365 U.S. 708, 709 (1961).

forth in Pennsylvania Rule of Criminal Procedure 523, such as: the nature of the offense, the strength of the evidence, the defendants financial resources, family and community ties, criminal record, and prior failures to appear. These hearings typically last only a few minutes. In Philadelphia and Pittsburgh, magistrates also employ a empirical risk assessment tool, meant to standardize decisions regarding pretrial detention and the assessment of money bail.²⁰

Should money bail be set, detainees may only secure their release through the satisfaction of its financial terms. In Philadelphia, detainees may post 10% of the money bail amount directly to the court. Detainees who cannot afford the financial condition of their release remain incarcerated for months or even years awaiting trial. Detainees have the opportunity to move for a reduction in their money bail after the initial hearing. We focus on the initial assessment of money bail, as it is the product of a randomized judicial decision, and find this decision is influential in determining the final amount the defendant is required to pay, regardless of modifications.

The timeline of defendant actions around the release determination varies from state to state. In Pennsylvania, the detention hearing precedes the entry of the plea, ensuring that the magistrate’s assessment of money bail is a factor in the defendant’s plea decision from the beginning.

3 Data and Empirical Strategy

3.1 Data Summary

We obtained comprehensive criminal data from the Administrative Office of the Pennsylvania Courts for 2010-2015. These include records from the local magistrate courts as well as subsequent judicial and defendant decisions from the higher Court of Common Pleas. In Philadelphia, a separate municipal court system typically handles initial defendant arraignment.

Table 1 summarizes the data for our focal region of Philadelphia, where we are best able to establish judicial randomization, as well as Pittsburgh—the second largest jurisdiction in

²⁰Although we find that these tools do not eliminate the exercise of wide judicial discretion.

the state. Our data contain information about the entire history of detention determinations and money bail assessments on criminal defendants (although we focus on the money bail amount resulting from the initial hearing); disposition information on the list of charged offenses; bench warrant information; and final sentencing outcomes for individual defendants. Our first appendix table, Table A1, contains the top 10 most common offenses and basic characteristics of the cases associated with those offenses.

3.2 Empirical Strategy

A simple approach to addressing the role of money bail would be to run the OLS regression:

$$Guilt_{it} = \alpha + \beta Bail_{it} + \varepsilon_{it}$$

where $Bail_{it}$ is an indicator for whether or not individual i is assigned money bail in time t . Table 2 illustrates this strategy. Column 1 suggests that being assessed money bail results in a 1.4 percentage point increase in the probability of pleading guilty. As shown in column 3, this goes up to 4.3 percentage points after adding a battery of additional controls, including gender, race, age, and offense fixed effects. This relationship is confirmed in column 4, where we focus on the log of the bail amount instead of the indicator for money bail assessment. Figure 1 provides an illustration of this correlation for one offense: possession of marijuana. Defendants charged with this offense are substantially more likely to be found guilty when assessed money bail.

While these estimates are consistent with a causal interpretation that higher bail amounts induce convictions, they are also consistent with a spurious correlation resulting from the endogenous bail assessment. Recall that bail assessments are not made randomly, but are intended to be calibrated against the nature of the offense, the flight risk of the individual, and even the strength of the case. As these factors are also likely to be associated with the underlying guilt of the defendant, the results from Table 1 may not reflect a causal role of bail.

Concerns about the endogenous assignment of bail are heightened by the results shown in Panel A of Figure 2, which displays the coefficients from a regression of money bail on

various covariates. While there is a raw univariate correlation with guilt, the assessment of money bail is also associated with gender, race, and prior cases. The correlation of money bail with these covariates is indicative of the endogenous initial assignment of money bail.

The goal of our empirical strategy is to address this endogeneity concern using the effectively random assignment of defendants to judges. Bail judges differ widely in how they treat similarly situated defendants. Some judges are far more likely to impose money bail, and to impose money bail in greater amounts, than other judges. In other words, certain judges over time tend to set bail when other judges would not, all else being equal. We refer to each judges propensity to set money bail as the judges severity. Therefore, a defendants chances of receiving money bail depend on the severity of the bail judge, not just the characteristics of the case and the defendant. Because defendants are close to randomly assigned to bail judges, the judicial assignment serves as the treatment in a natural experiment. We isolate the effect of the severity of the bail judge in setting money bail to determine the role of money bail on defendant outcomes.

The coefficients plotted in Panel B of Figure 2 reflect our attempt to isolate the impact of random judicial assignment on guilt. This figure shows the relationship between a battery of covariates and the component of money bail that is due only to judicial severity. They are created by regressing several covariates on the linear prediction of money bail on a judicial severity measure described below. None of the covariates appear to be related to the fraction of variation in money bail that is driven by judicial variation, indicating random assignment. By contrast, our outcome variable of guilt *is* associated with our instrument—showing how the judicial assignment of bail can produce causal estimates of the impact of money bail.

Conceptually, our identification strategy is to isolate the impact of the judge on the probability that an individual is assigned money bail. One approach would be to use judge-specific fixed effects to instrument for whether a defendant is assigned bail. This would involve estimating a first stage, for individual i in court c with judge j , of:

$$Bail_{icjt} = \alpha + \gamma_c + \delta_j + v_{it}$$

and estimating the effect of $Bail_{icjt}$ on guilt in a second stage, where δ_j are judge fixed effects. However, the assumptions required for IV estimation via two-stage least squares

may be violated in finite samples because of a mechanical correlation in the first stage. The estimated judge fixed effects are essentially an average across defendants, and with a small number of cases each defendant contributes significantly to the average. As discussed above, a defendant’s own bail assessment is likely to be correlated with unobserved factors that are associated with guilt. If this is true, then averaging that bail assessment with a finite number of other defendants’ assessments will not in general eliminate the correlation.

A solution to this problem in the literature (e.g., Dobbie and Song (2015)) involves estimating a leave-out mean for each defendant:

$$Z_{icjt} = \frac{1}{n_{cjt} - 1} \left(\sum_{k=1}^{n_{cjt}} (Bail_k) - Bail_i \right) - \frac{1}{n_{ct} - 1} \left(\sum_{k=1}^{n_{ct}} (Bail_k) - Bail_i \right)$$

which we refer to as judicial severity. The first term of Z_{icjt} is simply the average of $Bail_{kcjt}$ for all individuals faced by judge j except for i (all $k \neq i$). The second term subtracts out the average of $Bail_{kcjt}$ at the court c , once again omitting individual i . Intuitively, Z_{icjt} is simply judge j ’s average relative to the court’s average, computed using everyone but i . Because Z_{icjt} is computed without using individual i , there is no mechanical correlation. This leave-out mean is then used as an instrument in place of judge fixed effects.

While the exposition above demonstrates a judge-level leave-out mean, our preferred instrument is slightly more granular. To account for possible non-random assignment by offense we compute a leave-out mean at the offense-judge level. That is, the average for a judge for a given offense type, relative to the court average for that offense. For this instrument, we need only assume that individuals of the same offense category are randomly assigned to judges. Our primary specifications depend on a version of the instrument in which $Bail_{it}$ is defined as the binary decision of whether to assign bail or not. However, we also examine alternative continuous measures, including $\log(1 + \text{bail amount})$.

Panel A of Figure 3 illustrates our estimate of judicial severity against the log bail amount, showing that judge severity is highly predictive of bail amounts faced by criminal defendants. Panel B shows that our judge severity measure is consistent over time, suggesting that judge severity is driven by idiosyncratic personal factors rather than temporary shocks or case

characteristics (judge severity is even consistent across different offices when judges move to serve in other jurisdictions).

In our main specifications, we instrument for the Bail amount $Bail_{ict_o}$ with Z_{ictjo} , our measure of judge severity taken from a within offense measure:

$$\begin{aligned} Guilt_{ict_o} &= \alpha + \beta Bail_{ict_o} + X'_{ict_o} \delta + \eta_{cto} + \varepsilon_{ictjo} \\ Bail_{ict_o} &= \alpha + \gamma Z_{ictjo} + X'_{ict_o} \zeta + \rho_{cto} + v_{ictjo} \end{aligned}$$

with errors clustered at the jurisdiction-judge-year level. Our identifying assumption, taken from judge randomization, is that:

$$\text{corr}(Z_{ictjo}, \varepsilon_{ictjo}) = 0.$$

In the next section, we provide supporting evidence for this assumption.

It is important to note that these results are created using an instrumental variable approach that focuses on criminal defendants induced to pay money bail as a result of judicial severity. In other words, we estimate a local average treatment effect (LATE) identified on the basis of individuals for whom changes in bail assessment resulting from variation in judicial severity impact guilty pleas. These defendants are more likely to represent criminal cases for which there is more scope for judicial variation in bail setting. Nevertheless, we do find that our results persist in a number of important subcategories (including defendants facing felonies), and our results are quite comparable in both Philadelphia and Pittsburgh. These checks suggest that our results may have external validity outside of the precise jurisdictions we examine.

3.3 Randomization Check

Though our analysis of the judicial assignment process in Philadelphia leads us to expect close-to-random assignment of cases across judges, we check this assumption by examining the association between our leave-out-mean estimator and a series of defendant covariates in Table 3. Column 1 illustrates the means of the covariates we analyze. Column 2 regresses

our instrument against each covariate in isolation with no additional controls and reports the coefficient. Column 3 regresses our instrument against all covariates and includes fixed effects for the most severe offense among the defendant’s charges. Column 4 adds additional month-of-arraignment fixed effects.

Across all specifications, we find strong evidence for random assignment. F-statistics of the joint significance of covariates we test against our instrument are 0.54 with only month fixed effects and 0.34 when including both month fixed effects and offense controls.

4 Results

4.1 IV Results

Table 4 presents our main results from Philadelphia. The first column shows the first stage—a regression of our instrument of judicial severity against a binary indicator of whether the defendant was assessed money bail. While defendants are on average likely to receive money bail (62%), we find that judicial factors also play a large role. Our first stage suggests strong instrumental validity: being assigned to a more severe judge results in defendants facing a higher likelihood of being assessed money bail. Given the close-to-random assignment to judges and the lack of correlation between our instrument and observable defendant characteristics, we interpret this first stage as indicating that judicial severity provides effectively exogenous variation in money bail.

Column 2 presents the reduced form—a direct regression of our instrument of judge severity against the outcome of guilt. Though this relationship will be attenuated—since not all people who receive a strict judge are impacted by way of higher bail amounts—the strong and significant relationship in the reduced form indicates a causal relationship between judge severity and conviction.

The third column scales the reduced form by the first stage to produce our instrumental variables estimate of the relationship between money bail and conviction. Our estimate suggests that defendants who are required to pay money bail as a result of being assigned to a severe judge are 6 percentage points more likely be convicted. Given a baseline guilt level

of 50% in our sample, our estimate suggests that the presence of money bail increases the likelihood that a defendant is found guilty by about 12%.

This estimate is large, tightly identified through our measure of judicial severity, and suggests a powerful role for money bail in inducing convictions. Our data do not permit complete analysis of whether convictions result from plea bargains or trials. However, we have strong results when focusing on cases in which we can explicitly observe plea behavior, and cases proceeding to trial appear in our sample only rarely. We believe our estimates are primarily driven by defendant plea behavior.

Table 4 also provides suggestive estimates regarding the role of race in case outcomes. Column 1 shows that non-white defendants are 1.4 percentage points more likely to be assessed money bail. However, columns 2 and 3 show that non-whites are *less* likely to be found guilty of crimes. While these results should not be interpreted causally, as they do not exploit judicial randomization and may simply reflect non-racial factors associated with race, they are consistent with racial bias in the criminal justice system.

We next detail the relationship between money bail, pretrial detention, and convictions. There are a number of paths a defendant may take following the initial bail assessment. We consider a categorization of four possible paths in a criminal case: defendants may be detained and found guilty, detained and found not guilty, released and found guilty, or released and found not guilty. Table 5 attempts to analyze the impact of money bail on the flow of defendants between these four categories. Each of the four columns presents an IV regression (as in column 3 of Table 2) with one of those categories as the dependent variable. As the dependent variables across the four columns are mutually exclusive and exhaustive, one of the columns is redundant, in the sense that the coefficients in any row must sum to 0. However, examining all four columns provides a useful picture of the impact of money bail on the path defendants take from bail assessment to their ultimate case outcome.

Since defendants not receiving money bail are presumptively released, we can assume that the imposition of money bail is unlikely to *increase* the number who are released. And in fact, we observe that the judicial assignment of money bail reduces the outcome of release both in column 2 (release and guilty) and column 4 (release and not guilty). Although we

are not able to precisely estimate the effects in either column, Table 5 suggests that money bail decreases the the probability that a defendant is released and ultimately found guilty by nearly 10 percentage points and decreases the probability that a defendant is released and found not guilty by nearly 8 percentage points.

The reduction in the released population must be matched by an increase in the detained population. Nearly the entire increase falls into the first column: we see a 16 percentage point increase in the outcome of detention and guilt. In other words, money bail increases the probability of detention for those who would be counterfactually released, and the majority of the population that is detained as a result of money bail is ultimately convicted.

4.2 Robustness

For robustness, we provide a number of additional checks. Table 6 explores our main IV specification as illustrated in column 3 of Table 4 for different subsamples—being charged with a felony, having a public defender, being male, and being non-white. While none of these estimates are statistically different from our main estimates, it is noteworthy given our findings on race discussed above that our IV point estimate for non-whites is higher, at 8.3 percentage points. Our finding on felonies, an 8.1 percentage point increase, is not precisely estimated but is high in magnitude and suggestive that instances of guilt induced by higher bail are not for low-level crimes exclusively. Being convicted of a felony typically results in severe long-term impacts on defendant outcomes, including opportunities for future employment and voting status.²¹

Tables 7 and 8 explore alternate specifications of our judge severity measure. Table 7 uses the log of 1 plus the bail amount, effectively using both the intensive and extensive margins. Table 8 uses the log of the bail amount, conditional on being assigned money bail—that is, only the intensive margin. In Philadelphia, we find no evidence that the intensive margin matters, only the extensive margin of being assessed money bail.

Next, we turn to Pittsburgh. As discussed in section 2, the nature of judicial assignment in Pittsburgh and the rest of the state is not as clean and does not permit a straightforward

²¹Though convicted felons can vote in Pennsylvania.

causal estimate. Rather than a central courtroom that handles all cases, individual magistrate judges are elected to districts in the city and are principally responsible for cases within that jurisdiction. Our judge measure therefore captures the variation arising from the difference between the main judge and other judges, which account for 20–30% of cases in districts, typically due to the main judge being absent on a weekend, night, vacation, or for some other reason. Our identifying assumption is that case loads, conditional on observables, do not differ between the main judge and other judges in a given district.

A randomization check in Appendix Table A2 suggests that there is non-random judicial assignment in Pittsburgh, with an F-statistic of 4.74 for various defendant characteristics regressed against a measure of judicial severity within Allegheny County. Nonetheless, to establish robustness of our primary finding outside of the city of Philadelphia, we attempt a version of our main specification in Pittsburgh in Table 9. Remarkably, given the extent of non-random assignment, we find estimates that are virtually identical in Pittsburgh—in column 3, we see a 6.4 percentage point increase in guilt as a result of money bail assessment. Due to the comparability of the Pittsburgh and Philadelphia samples, in subsequent analysis on recidivism we combine the two samples in order to maximize statistical power.

4.3 Other Outcomes

4.3.1 Recidivism

We next look at the outcome of recidivism, which we explore in Table 10. Existing literature has documented the role of incarceration on future criminal activity.²² There are a variety of mechanisms which appear to drive this relationship, including the negative impact of incarceration on labor market outcomes (encouraging illegal income seeking), family disruption, loss of human capital, and peer effects resulting from associations with other detainees.

We extend this literature by examining the role of money bail on future criminal activity. There are a number of channels through which money bail in particular might cause recidivism. As our results from section 4.1 show, money bail causes convictions, which in turn may entail incarceration and subsequent effects. Even without additional convictions, money bail

²²See for instance Mueller-Smith (2016) and Aizer and Doyle (2015).

may impact future criminal activity via job loss during pretrial detention, financial hardship caused by raising funds to make bail, or other factors. Our data do not permit, and we do not attempt, a complete separation of the various mechanisms linking bail assessment to future criminal activity.

We follow some of the prior literature in this area by restructuring our data into a yearly panel format. Our main specification follows the first criminal offense committed by defendants in our data and estimates:

$$Recidivism_{i,t+y} = \alpha + X_{i,t} + \mu_y + \mu_t + \beta Bail_{i,t} + \varepsilon_{i,t+y}$$

Where $Recidivism_{i,t+y}$ is a binary indicator equal to one if the defendant is charged with a crime in the y th calendar year after his or her initial charge (where the initial charge year is denoted by t). $X_{i,t}$ is the full list of defendant controls previously included (these include the age, race, and gender of the defendant; along with controls for the criminal charge) which are taken in the calendar year of criminal charge. μ_y is a calendar year fixed effect; μ_t controls for the month of arraignment. $Bail_{i,t}$ is an indicator for whether the defendant was required to post money bail, and is instrumented for using our judicial severity measure. β remains the key causal variable of interest, capturing the role of exogenous bail assessments on future recidivism. Our yearly defendant panel begins in the calendar year in which defendants enter our data as a result of initial charge, and ends in 2015 (the last year for which we have criminal charge data). Standard errors are clustered at the defendant level.

The base rate of yearly recidivism in our sample (around 12% in Philadelphia) along with the standard errors of our IV estimates result in some statistical imprecision in our estimate in Philadelphia. In column 1 of Table 10, we examine the role of money bail assessment on the yearly probability of future criminal behavior. Though the estimate of 0.007 is quite large economically (corresponding to a 0.7 percentage point yearly increase in the probability of committing future crime, or a 6% increase), we are unable to statistically distinguish this result from zero. In order to gain statistical precision, in column two we expand our sample to a “Combined Sample” which includes data from both Pittsburgh and Philadelphia. Though the judicial assignment process is not as random in Pittsburgh as in Philadelphia, we find

quite comparable results in both localities in most of our specifications—including recidivism. We estimate an identical effect of 0.007 in the Combined Sample (or an increase of 9%), an effect which is statistically significant at a 5% level.

In columns 3 and 4, we separate future criminal charges into felonies and misdemeanors. We find that the bulk of our recidivism result is driven by money bail causing defendants to be charged with misdemeanors, a finding consistent with prior literature and the intuition that incarceration spells should raise the chances of committing minor crimes more than severe ones.

Our effects can be compared with the literature examining the role of incarceration spells on future criminal activity. Our results are somewhat lower than Aizer and Doyle (2015), who find juvenile incarceration increases adult incarceration by 23 percentage points, consistent with a larger role for incarceration spells on the criminal behavior of younger defendants. Our finding is more comparable to Mueller-Smith (2016), who finds that each year of incarceration results in a 4–7 percentage point quarterly increase in post-release criminal activity. While these studies examine the role of incarceration spells on criminal behavior directly, we examine the role of money bail—which is unlikely to be a binding constraint for many defendants, but leads to sizable financial costs or detention for some defendants. It is unsurprising our results are somewhat smaller or attenuated as a result, but remain striking in that we find evidence that money bail causes recidivism. Though we emphasize the statistical imprecision of our estimates, our results suggest that the assessment of money bail yields substantial negative externalities in terms of greater criminal charges.

4.3.2 Failure to Appear

We finally analyze whether money bail impacts the probability that a defendant appears in court. While we do not explicitly observe failures to appear, we construct a series of proxies. The first, which we label “Explicit FTA”, is our most conservative. It reflects an explicit entry in the court calendar files of a warrant being issued as a result of the defendant failing to appear. While this surely captures instances in which the defendant failed to appear, the files lack a standard coding procedure, and so this measure may underreport the true number

of failures to appear.²³ Our second measure, “Warrant” is indicates whether a warrant was issued at a scheduled court calendar event. This event is slightly more consistently coded in the calendar files, but may capture warrants issued for reasons other than failures to appear. This measure has a higher mean than the Explicit FTA, occurring in approximately one out of a hundred cases, but still may underreport the true number of failures to appear.

Table 11 presents IV regressions as in column 3 of Table 4, but with Explicit FTA and Warrant as the dependent variables. The left columns restrict the sample to Philadelphia, while the right columns include the Combined Sample of Philadelphia and Pittsburgh. The coefficients on money bail are positive and insignificant in all specifications. While the imprecision of these estimates prevents us from drawing much from these results, we note that the goal of money bail is to ensure appearance at trial, that is, to have a substantial negative effect on failures to appear. Our results suggest that money bail has a negligible effect or, if anything, increases failures to appear. Of course, a substantial caveat to these results is imposed by the limitations of our data, which rely on proxies to measure defendants’ failures to appear. Due to these data limitations, we emphasize only that our data do not provide evidence that money bail assessments increase defendants’ probability of appearing in court.

5 Conclusion

Our findings raise substantial questions about the nature of the money bail system. We find substantial variation among individual magistrates in setting money bail, suggesting that the imposition of money bail, and therefore pretrial detention, is a function of the judge one receives. We exploit the random assignment of defendants to judges to examine the causal implications of money bail. Defendants assessed money bail have a 6 percentage point (12%) higher chance of conviction and a 0.7 percentage point higher yearly probability of being charged with further crimes (or a 6–9% increase). Our results are robust to alternative specifications and examining different subgroups.

²³The average of the binary indicator for this measure is extremely small: 0.001, likely reflecting this underreporting.

These results have implications for both our understanding of criminal defendants' economic circumstances and the institutional design of the American money bail system. Existing research shows that a quarter of Americans report that they cannot come up with \$2,000 in 30 days (Lusardi, Schneider and Tufano (2011)), and we demonstrate how these liquidity issues have real impacts on household outcomes. The demands of money bail are quite low for those with easy access to cash, so we expect our findings are largely driven by those facing severe liquidity constraints.

We also document how money bail impacts the later outcome of recidivism, potentially through channels of pretrial detention, the financial imposition of paying bail, or the impact of post-conviction incarceration spells. Our work complements other literature demonstrating how incarceration causally influences future criminal behavior (for instance, Mueller-Smith (2016) and Aizer and Doyle (2015)), but differs by providing a link to the pretrial process.

From a legal perspective, our work raises both conceptual and practical issues. Examining the pretrial detention phase of the criminal justice system is particularly topical given the recent policy focus on reducing the incarcerated population in the United States. While sentencing decisions may involve tradeoffs between harms to criminal defendants and the goals of punishment, our analysis indicates a much weaker tradeoff regarding the imposition of money bail on criminal defendants. Money bail imposes many costs on society—including those stemming from pretrial detention, convictions, and recidivism—yet we find no evidence that money bail results in positive outcomes, such as an increase in defendants' rate of appearance at court. Reducing the number of arrestees held pre-trial may be a relatively low-cost way of decreasing the size of the incarcerated population.

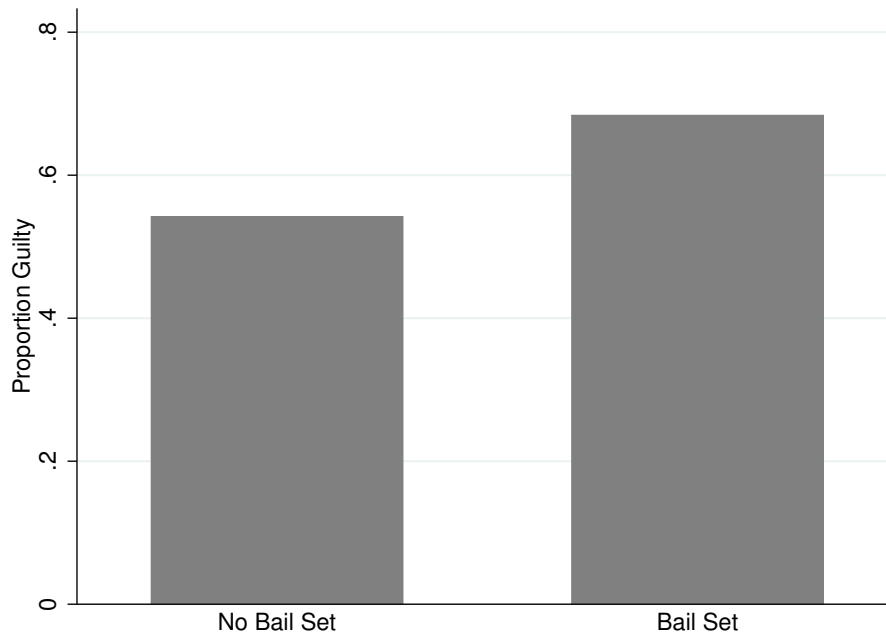
The system of money bail also raises substantive issues related to equal protection. Past work has noted the potential for racial discrimination in the bail system (e.g. Ayres and Waldfogel, 1994) and we find suggestive evidence consistent with this notion: non-white defendants are assessed bail more frequently, despite being convicted less often. However, our primary result highlights the importance of wealth in access to justice. Many defendants appear to be found guilty simply due to an inability to pay money bail, indicating two systems: one for the rich and one for the poor.

References

- Abrams, David S, and Chris Rohlfs.** 2011. “Optimal Bail and the Value of Freedom: Evidence from the Philadelphia Bail Experiment” *Economic Inquiry*, 49(3): 750–770.
- Aizer, Anna, and Joseph J. Doyle.** 2015. “Juvenile Incarceration, Human Capital, and Future Crime: Evidence from Randomly Assigned Judges” *The Quarterly Journal of Economics*.
- Appleman, Laura I.** 2012. “Justice in the Shadowlands: Pretrial Detention, Punishment, & the Sixth Amendment” *Wash. & Lee L. Rev.*, 69: 1297.
- Ayres, Ian, and Joel Waldfogel.** 1994. “A Market Test for Race Discrimination in Bail Setting” *Stanford Law Review*, 987–1047.
- Baylor, Amber.** 2015. “Beyond the Visiting Room: A Defense Council Challenge to Conditions in Pretrial Confinement” *Cardozo Pub. L. Pol’y & Ethics J.*, 14: 1–229.
- Bechtel, Kristin, John Clark, Michael R Jones, and David J Levin.** 2012. “Dispelling the Myths: What Policy Makers Need to Know About Pretrial Research” *Pretrial Justice Institute*.
- Chang, Tom, and Antoinette Schoar.** 2007. “The Effect of Judicial Bias in Chapter 11 Reorganization” *Unpublished manuscript. Massachusetts Institute of Technology, Cambridge, Mass.*
- Dobbie, Will, and Jae Song.** 2015. “Debt Relief and Debtor Outcomes: Measuring the Effects of Consumer Bankruptcy Protection” *American Economic Review*, 105(3): 1272–1311.
- Doyle Jr, Joseph J.** 2007. “Child Protection and Child Outcomes: Measuring the Effects of Foster Care” *The American Economic Review*, 97(5): 1583–1610.
- Doyle Jr, Joseph J.** 2008. “Child Protection and Adult Crime: Using Investigator Assignment to Estimate Causal Effects of Foster Care” *Journal of Political Economy*, 116(4): 746–770.

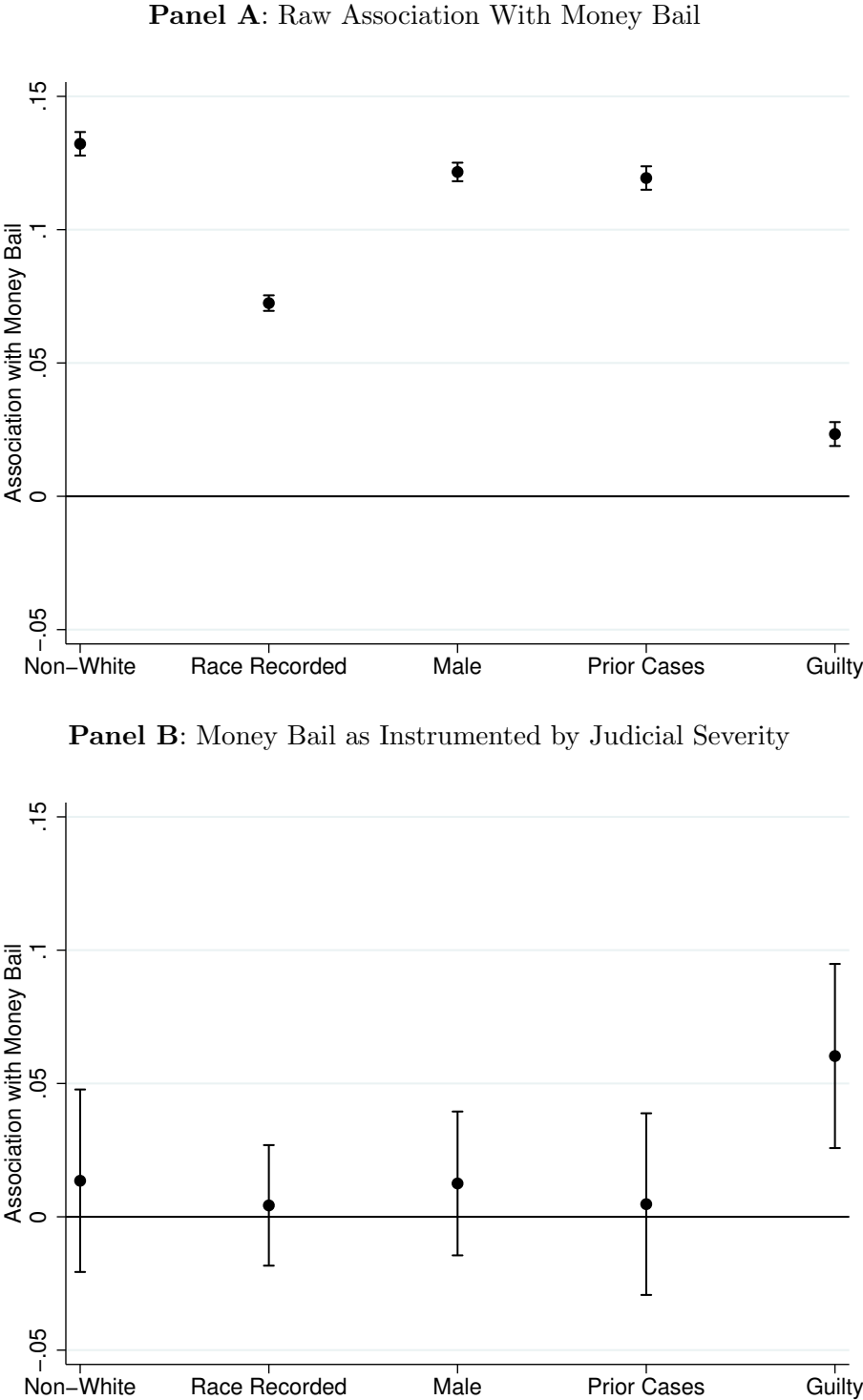
- Eichel, L.** 2010. “Philadelphia’s Crowded, Costly Jails: the Search for Safe Solutions” *Philadelphia: Pew Charitable Trusts*.
- Kling, Jeffrey R.** 2006. “Incarceration Length, Employment, and Earnings” *The American Economic Review*, 96(3): 863.
- Lowenkamp, Christopher T, Marie VanNostrand, and Alexander Holsinger.** 2013a. “The Hidden Costs of Pretrial Detention” *Laura and John Arnold Foundation*.
- Lowenkamp, Christopher T, Marie VanNostrand, and Alexander Holsinger.** 2013b. “Investigating the Impact of Pretrial Detention on Sentencing Outcomes” *Laura and John Arnold Foundation*.
- Lusardi, Annamaria, Daniel Schneider, and Peter Tufano.** 2011. “Financially Fragile Households: Evidence and Implications” *Brookings Papers on Economic Activity*, 83–134.
- Mueller-Smith, Michael.** 2016. “The Criminal and Labor Market Impacts of Incarceration” Unpublished manuscript, University of Michigan.
- Phillips, Mary T.** 2007. “Bail, Detention, and Nonfelony Case Outcomes” *New York City Criminal Justice Agency, INC*.
- Phillips, Mary T.** 2008. “Bail, Detention, and Felony Case Outcomes” *New York City Criminal Justice Agency, INC*.
- Phillips, Mary T.** 2012. “A Decade of Bail Research in New York City” *New York City Criminal Justice Agency, INC*.
- Stevenson, Megan.** 2016. “Distortion of Justice: How the Inability to Pay Bail Affects Case Outcomes” Unpublished manuscript, University of Pennsylvania.

Figure 1
Guilt by Bail Status: Possession of Marijuana



This figure compares the proportion of people with a case outcome of guilty across individuals for whom money bail was required, and those for which money bail was not required. The data subsets to cases in Pennsylvania between 2010–2015 in which criminal defendants were charged with the offense of the possession of marijuana. Absent additional controls, we observe that among criminal defendants charged with this offense, those for whom money bail was imposed over 10 percentage points more likely to be found guilty.

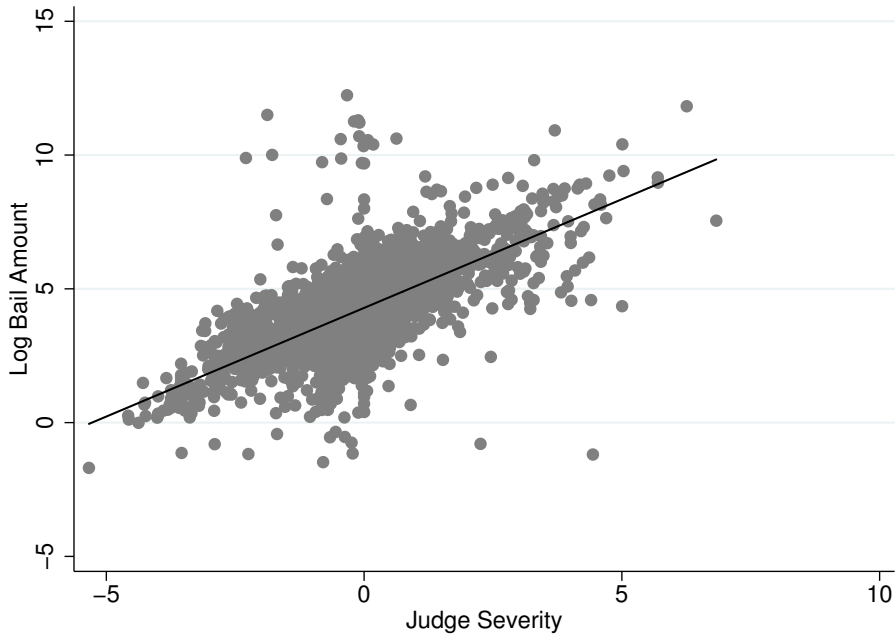
Figure 2
 Randomization Check: Regression Coefficients of Covariates on Money Bail



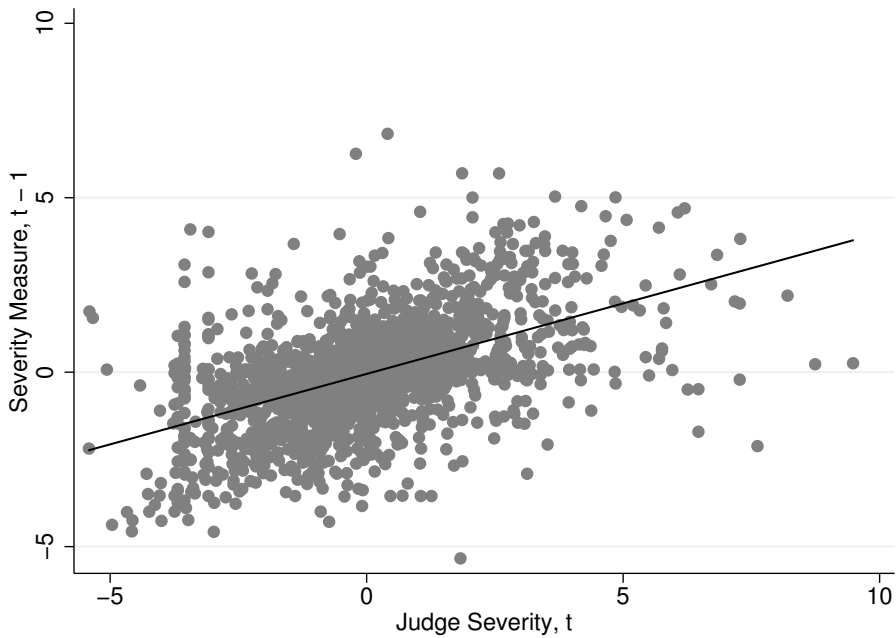
This figure examines the relationship between defendant characteristics and the outcome of being assigned any money bail. Panel A shows coefficients of bivariate regressions of each characteristic on a binary indicator equal to one if the defendant is assigned money bail. Panel B shows coefficients of iv versions of the regressions in Panel A, with our judge severity measure instrumenting for the binary indicator for money bail. The rightmost estimates in both panels show guilt, our primary outcome of interest, rather than a defendant characteristic.

Figure 3

Panel A: Judicial Severity vs. Log Bail Amount



Panel B: Judicial Severity t-1 v. Severity in t



This figure examines our judicial severity measure. We measure judicial severity using a leave-out-mean of the $\log[1 + \text{Money Bail Amount}]$ at the judge-year level, relative to the leave-out-mean average at the court in the same year. These computed judicial measures are then regressed against individual measures of log bail with fixed effects for the month of arraignment. The resulting residuals are averaged at the judge-year level and the average log bail amount is added to each residuals. Panel A contrasts the averaged measure of judicial severity against average log bail amounts at the judge-year level. Panel B compares the averaged measure of judicial severity in one year against the same judge's measure the previous year.

Table 1
Summary Statistics

	Mean	SD	Mean	SD
Age	33.5	11.6	33.4	11.7
Non-White	0.56	-	0.42	-
Race Missing	0.12	-	0.027	-
Male	0.81	-	0.77	-
Prior Cases	0.42	-	0.33	-
Total Offenses	3.42	2.95	4.68	3.48
Case Guilty	0.50	-	0.77	-
Total Bail	24083	74891	12964	28697
Money Bail	0.62	-	0.53	-
Posted Money Bail	0.31	-	0.24	-
Bench Warrant	0.019	-	0.15	-
Charged With Future Crime	0.43	-	0.33	-
Sample Size	203188		57145	

The sample includes criminal cases in Philadelphia and Pittsburgh in the period 2010–2015. Bail information is reported from the magistrate level; case disposition information is taken from the most severe offense for which the defendant was charged; and bench warrant information is taken from a merged dataset of all bench warrants filed in association with a particular docket. Prior cases are taken within our sample, so the measure does not account for crimes committed in the period prior to our sample. Defendants are recorded as having posted money bail if money bail was initially set and their bail status was at some point listed as posted.

Table 2
 OLS Regressions of Guilt on assigned Bail

	No Controls	Offense FEs	Full Controls	Full Controls
Any Money Bail	0.014* (0.008)	0.092*** (0.007)	0.043*** (0.006)	
Log(Money Bail)				0.004*** (0.001)
Proportion Guilty	0.498	0.498	0.498	0.498
N	200643	200643	200617	200617
Case Controls	No	No	Yes	Yes
Offense FEs	No	Yes	Yes	Yes
Month FEs	Yes	Yes	Yes	Yes

OLS regressions of a binary indicator of a case disposition of guilt on a binary indicator equal to 1 if money bail is initially assigned to the case (Columns 1-3) or the continuous measure $\log[1+\text{money bail amount}]$ (column 4). Case controls include age, age², prior cases, number of offenses, and indicators for race, gender and out-of-state. Offense and month of arraignment fixed effects are also included. Standard errors are clustered at the judge-year level * $p < 0.10$, ** $p < 0.05$, *** $p < 0.01$.

Table 3
Randomization Tests

	Means	Pairwise	Joint Regressions	
			No Controls	Controls
Non-White	0.56	0.00035 (0.000)	0.00037 (0.001)	0.00020 (0.001)
Race Missing	0.12	-0.00026 (0.001)	-0.000015 (0.001)	-0.00014 (0.001)
Male	0.81	0.00053 (0.001)	0.00043 (0.001)	-0.000066 (0.001)
Age	33.5	-0.0000010 (0.000)	-0.00000041 (0.000)	0.000016 (0.000)
Out of State	0.031	0.0018 (0.001)	0.0019 (0.001)	0.0026 (0.002)
Prior Cases	0.42	0.00013 (0.000)	0.00013 (0.000)	0.00037 (0.001)
N. of cases			200617	200617
F-Statistic			0.54	0.34
Offense FEs		No	Yes	Yes
Month FEs		No	No	Yes

OLS regressions of our judge severity measure on case characteristics for the Philadelphia sample. Column 1 presents means of case characteristics. Column 2 presents coefficients of separate bivariate regressions of the judge severity measure on each case characteristic. Column 3 contains the coefficients from a single regression of the judge severity measure on all case characteristics and month fixed effects. Column 4 shows the coefficients from a regression identical to column 3, but additionally including offense fixed effects. F-statistics are reported for the test of joint significance of all shown case characteristics. * $p < 0.10$, ** $p < 0.05$, *** $p < 0.01$.

Table 4
IV Regressions of Guilt on Money Bail

	First Stage	Reduced Form	IV
	Any Money Bail	Case Guilty	Case Guilty
Severity	0.587*** (0.028)	0.036** (0.017)	
Any Money Bail			0.061** (0.028)
Non-White	0.014*** (0.003)	-0.026*** (0.003)	-0.027*** (0.003)
Male	0.077*** (0.006)	0.026*** (0.003)	0.021*** (0.003)
Mean of Dep. Var.	0.623	0.498	0.499
N	200617	200617	200615
Case Controls	Yes	Yes	Yes
Offense FEs	Yes	Yes	Yes
Month FEs	Yes	Yes	Yes

IV regressions of a binary indicator of a case disposition of guilt (Case Guilty) on a binary indicator equal to 1 if money bail is initially assigned (Any Money Bail) instrumented by our judge severity measure based on Any Money Bail. Only the Philadelphia sample is included. The first column presents the first stage, an OLS regression of Any Money Bail on our judge severity measure. The second column presents the reduced form: a regression of Case Guilty on our judge severity measure. The final column presents the IV regression itself. Case controls include age, age², prior cases, number of offenses, and an indicator for out-of-state. Offense and month of arraignment fixed effects are also included. Standard errors are clustered at the judge-year level * $p < 0.10$, ** $p < 0.05$, *** $p < 0.01$.

Table 5
 IV Regressions of Guilt \times Detention Status on Money Bail

	Guilty		Not Guilty	
	Detained	Released	Detained	Released
Any Money Bail	0.161*** (0.059)	-0.098* (0.060)	0.014 (0.050)	-0.077 (0.053)
Non-White	-0.006** (0.002)	-0.021*** (0.003)	0.029*** (0.003)	-0.003 (0.004)
Male	0.029*** (0.005)	-0.008 (0.005)	0.028*** (0.006)	-0.049*** (0.006)
Mean of Dep. Var.	0.226	0.272	0.178	0.323
N	200615	200615	200615	200615
Case Controls	Yes	Yes	Yes	Yes
Offense FEs	Yes	Yes	Yes	Yes
Month FEs	Yes	Yes	Yes	Yes

IV regressions of a binary indicator of a new measure of full defendant outcomes on a binary indicator equal to 1 if money bail is initially assigned (Any Money Bail) instrumented by our judge severity measure based on Any Money Bail. Only the Philadelphia sample is included. Outcomes for defendants are split into four categories corresponding to the interaction of being detained and a case disposition of guilty. Detained defendants were either remanded without the ability to post bail, or failed to post bail given the assessment of money bail. Released individuals either did not receive money bail or posted money bail. Each of the four columns presents an IV regression with one of those category as the dependent variable. Case controls include age, age², prior cases, number of offenses, and an indicator for out-of-state. Offense and month of arraignment fixed effects are also included. Standard errors are clustered at the judge-year level * $p < 0.10$, ** $p < 0.05$, *** $p < 0.01$.

Table 6
IV Regressions of Guilt on Money Bail by Case Characteristics

	Felony	Public Defender	Male	Non-White
Any Money Bail	0.081 (0.061)	0.054* (0.029)	0.060* (0.032)	0.083** (0.034)
Non-White	-0.045*** (0.003)	-0.026*** (0.003)	-0.026*** (0.003)	
Male	0.020*** (0.006)	0.024*** (0.004)		0.024*** (0.004)
Proportion Guilty	0.541	0.492	0.509	0.515
N	94658	126757	162691	112280
Case Controls	Yes	Yes	Yes	Yes
Offense FEs	Yes	Yes	Yes	Yes
Month FEs	Yes	Yes	Yes	Yes

IV regressions of a binary indicator of case dispositions on a binary indicator equal to 1 if money bail is initially assigned (Any Money Bail) instrumented by our judge severity measure based on Any Money Bail. Only the Philadelphia sample is included. Each column restricts to the subsample indicated in the column header. Felony refers to defendants who are charged with a felony offenses, public defender refers to defendants represented by public defenders. Case controls include age, age², prior cases, number of offenses, and an indicator for out-of-state. Offense and month of arraignment fixed effects are also included. Standard errors are clustered at the judge-year level * $p < 0.10$, ** $p < 0.05$, *** $p < 0.01$.

Table 7
IV Regressions of Guilt on Log(Money Bail)

	First Stage	Reduced Form	IV
	Log(Money Bail)	Case Guilty	Case Guilty
Severity	0.561*** (0.027)	0.004* (0.002)	
Log(Money Bail)			0.006** (0.003)
Non-White	0.153*** (0.024)	-0.026*** (0.003)	-0.027*** (0.003)
Male	0.829*** (0.058)	0.026*** (0.003)	0.021*** (0.004)
Mean of Dep. Var.	5.695	0.498	0.499
N	200617	200617	200615
Case Controls	Yes	Yes	Yes
Offense FEs	Yes	Yes	Yes
Month FEs	Yes	Yes	Yes

IV regressions of a binary indicator of a case disposition of guilt (Case Guilty) on the continuous measure $\log[1+\text{money bail amount}]$ (Log(Money Bail)) instrumented by our judge severity measure based on Log(Money Bail). Only the Philadelphia sample is included. The first column presents the first stage, an OLS regression of Log(Money Bail) on our judge severity measure. The second column presents the reduced form: a regression of Case Guilty on our judge severity measure. The final column presents the IV regression itself. Case controls include age, age², prior cases, number of offenses, and an indicator for out-of-state. Offense and month of arraignment fixed effects are also included. Standard errors are clustered at the judge-year level * $p < 0.10$, ** $p < 0.05$, *** $p < 0.01$.

Table 8
 IV Regressions of Guilt on Log(Money Bail) – Intensive Margin

	First Stage	Reduced Form	IV
	Log(Money Bail Bail>0)	Case Guilty	Case Guilty
Severity	0.489*** (0.035)	-0.006 (0.008)	
Log(Money Bail Bail > 0)			-0.013 (0.016)
Non-White	0.047*** (0.007)	-0.037*** (0.002)	-0.036*** (0.002)
Male	0.344*** (0.021)	0.019*** (0.004)	0.023*** (0.006)
Mean of Dep. Var.	9.143	0.506	0.499
N	124352	124352	124338
Case Controls	Yes	Yes	Yes
Offense FEs	Yes	Yes	Yes
Month FEs	Yes	Yes	Yes

IV regressions of a binary indicator of a case disposition of guilt (Case Guilty) on the continuous measure log[money bail amount], instrumented by our judge severity measure based on log[money bail amount]. Only the Philadelphia sample is included, and defendants with no money bail are excluded. The first column presents the first stage, an OLS regression of log[money bail amount] on our judge severity measure. The second column presents the reduced form: a regression of Case Guilty on our judge severity measure. The final column presents the IV regression itself. Case controls include age, age², prior cases, number of offenses, and an indicator for out-of-state. Offense and month of arraignment fixed effects are also included. Standard errors are clustered at the judge-year level * $p < 0.10$, ** $p < 0.05$, *** $p < 0.01$.

Table 9
IV Regressions of Guilt on Money Bail – Pittsburgh

	First Stage	Reduced Form	IV
	Any Money Bail	Case Guilty	Case Guilty
Severity	0.391*** (0.026)	0.025* (0.013)	
Any Money Bail			0.064** (0.031)
Non-White	0.107*** (0.006)	-0.004 (0.006)	-0.011 (0.007)
Male	0.084*** (0.006)	0.053*** (0.006)	0.047*** (0.006)
Mean of Dep. Var.	0.495	0.777	0.766
N	38149	38149	38141
Case Controls	Yes	Yes	Yes
Offense FEs	Yes	Yes	Yes
Month FEs	Yes	Yes	Yes

IV regressions of a binary indicator of a case disposition of guilt (Case Guilty) on a binary indicator equal to 1 if money bail is initially assigned (Any Money Bail) instrumented by our judge severity measure based on Any Money Bail. Only the Allegheny county (Pittsburgh) sample is included. The first column presents the first stage, an OLS regression of Any Money Bail on our judge severity measure. The second column presents the reduced form: a regression of Case Guilty on our judge severity measure. The final column presents the IV regression itself. Case controls include age, age², prior cases, number of offenses, and an indicator for out-of-state. Offense and month of arraignment fixed effects are also included. Standard errors are clustered at the office-judge-year level * $p < 0.10$, ** $p < 0.05$, *** $p < 0.01$.

Table 10
 IV Panel Regressions of Recidivism on Money Bail

	Philadelphia	Combined Sample		
	All Charges	All Charges	Felony	Misdemeanor
Any Money Bail	0.007 (0.008)	0.007** (0.004)	0.002 (0.003)	0.006** (0.003)
Non-White	-0.012*** (0.001)	-0.008*** (0.001)	0.003*** (0.001)	-0.012*** (0.001)
Male	0.026*** (0.001)	0.017*** (0.001)	0.018*** (0.001)	0.002*** (0.001)
Mean of Dep. Var.	0.117	0.0811	0.0442	0.0424
N	522395	862163	862163	862163
Case Controls	Yes	Yes	Yes	Yes
Offense FEs	Yes	Yes	Yes	Yes
Month of Initial Offense FEs	Yes	Yes	Yes	Yes
Calendar Year FEs	Yes	Yes	Yes	Yes

IV regressions of recidivism on a binary indicator equal to 1 if money bail is initially assigned (Any Money Bail) instrumented by our judge severity measure. Recidivism is a binary indicator equal to one if the defendant is charged with a new offense in the current calendar year following the case in question. Only the IV regression is displayed in each column. Defendants are included in a yearly panel starting with the calendar year of offense until 2015 (the last year for which we have criminal charge data). Case controls are taken from the first case in our records only, and include age, age², prior cases, number of offenses, and an indicator for out-of-state. Subsequent charges are included only as instances of recidivism. Offense and month of arraignment fixed effects are also included, as are controls for the calendar year. The first column includes data only from Philadelphia (episodes of recidivism may reflect future crimes committed anywhere else in the state); the remaining columns include combined data from Pittsburgh and Philadelphia (the “Combined Sample”). Column 3 uses as a dependent variable only future crimes which are classified as felonies; column 4 focuses on future misdemeanor offenses. Standard errors are clustered at the defendant level * $p < 0.10$, ** $p < 0.05$, *** $p < 0.01$.

Table 11
IV Regressions of Failure to Appear on Money Bail

	Philadelphia		Combined Sample	
	Explicit FTA	Warrant	Explicit FTA	Warrant
Any Money Bail	0.003 (0.003)	0.018 (0.021)	0.002 (0.002)	0.005 (0.008)
Non-White	-0.000 (0.000)	-0.001 (0.001)	-0.000 (0.000)	-0.001 (0.001)
Male	-0.000 (0.000)	-0.000 (0.002)	-0.000 (0.000)	0.000 (0.001)
Mean of Dep. Var.	0.001	0.010	0.001	0.007
N	200615	200615	238614	299779
Case Controls	Yes	Yes	Yes	Yes
Offense FEs	Yes	Yes	Yes	Yes
Month FEs	Yes	Yes	Yes	Yes

IV regressions of binary indicators for failing to appear (FTA) at court dates on a binary indicator equal to 1 if money bail is initially assigned (Any Money Bail) instrumented by our judge severity measure based on Any Money Bail. The two columns present two different variables indicating that the defendant failed to appear. Calendar FTA is an indicator equal to one if the defendant is explicitly listed as having failed to appear at a scheduled calendar event in the data. Bench Warrant FTA is an indicator if a bench warrant was issued for the defendant. Only the Philadelphia sample is included. Case controls include age, age², prior cases, number of offenses, and an indicator for out-of-state. Offense and month of arraignment fixed effects are also included. Standard errors are clustered at the judge year level * $p < 0.10$, ** $p < 0.05$, *** $p < 0.01$.

Appendix

Table A1: Common Offenses

	Count	Any Money Bail	Bail Amount	Non-White	Male
Intentional Possession of a Controlled Substance	22,846	15%	\$643	48%	84%
Manufacture, Delivery, or Possession With Intent to Manufacture or Deliver	18,913	87%	\$17,511	56%	92%
Aggravated Assault	12,417	97%	\$49,645	63%	77%
DUI: 1st Offense	11,436	27%	\$2,166	43%	82%
Retail Theft-Take Merchandise	10,424	36%	\$1,284	58%	63%
Simple Assault	6,293	84%	\$4,449	54%	80%
Possession of Instrument Of Crime W/Intent to Employ	6,081	85%	\$10,928	54%	66%
Receiving Stolen Property	5,865	55%	\$14,205	59%	85%
Possession Of Marijuana	5,641	10%	\$433	72%	92%
Purchase or receipt of Controlled Substance by Unauthorized Person	5,518	11%	\$288	35%	76%

Table A2: Randomization Check in Pittsburgh

	Means	Pairwise	Joint Regressions	
			No Controls	Controls
Non-White	0.42	0.019*** (0.002)	0.019*** (0.002)	0.015*** (0.004)
Race Missing	0.027	0.0050 (0.007)	0.015** (0.007)	-0.013 (0.011)
Male	0.77	0.014*** (0.003)	0.013*** (0.003)	0.0093*** (0.003)
Age	33.4	-0.00011 (0.000)	-0.000042 (0.000)	0.000053 (0.000)
Out of State	0.029	0.015** (0.007)	0.016** (0.007)	0.014* (0.009)
Prior Cases	0.33	-0.0063*** (0.002)	-0.0060** (0.002)	0.0036 (0.003)
N. of cases			38149	38149
F-Statistic			20.0	4.74
Offense FEs		No	Yes	Yes
Month FEs		No	No	Yes